



New Mexico Orchid
Guild Newsletter

December
2011

Our next meeting will be held at the Bureau of Land Management 435 Montano NW on the Sunday JANUARY 8th, 2012 at 1:30 PM

The BLM is almost one mile west of Interstate 25. Take the Montgomery/Montano exit and go past Bob Turner's Ford Country turn at the Sonic Drive In one block East of Edith. The BLM building is the dark brick building on the North side of the street. Enter the main door and proceed to the conference room straight ahead.

As always please bring a snack to share

Members are encouraged to wear their membership badges

INSIDE:

Show and Tell
Winners

20th WOC

AOS Update

Monthly Checklist

Membership
Renewal Form

December 4th is our annual Holiday Party at the Savoy !

It's time again for our annual holiday party at the Savoy. This year the NMOG board is planning another "surprise fun event," so don't miss out.
(hint : bring your best singing voice)

GREAT GIFT IDEA !
2012 AOS CALENDARS WILL BE
AVAILABLE AT THE PARTY

January 2012 Meeting

Due to the New Year's Day Holiday our meeting will be held on Sunday, January 8th

February Meeting

Judges from the AOS Rocky Mountain Judging Center will present our program and will be judging plants. The three plant show and tell maximum plant per member will be waived for this meeting. Bring ALL your best to be judged.

Membership Renewal Time

Membership in NMOG is on a calendar year basis. All memberships are renewable in January. There is a membership form attached for your convenience. Please complete the form and mail it to the PO Box listed or bring it to the meeting on January 8th.

Join us in the BLM break room at 1:00 PM prior to the regular meeting for our **GROWERS FORUM**
Our own Mable Orndorff and Walter Prah will be discussing Cattleyas.
See you there !

GROWER ON CALL FOR DECEMBER

Any board member would be pleased to help you.
A listing of board members and their contact information can be found on page 2.



OrchidWiz Express 2012 is an easy-to-use application that allows orchid growers to get cultivation and genealogy information for thousands of species and more than 145,000 hybrids. It is aimed at the beginner to intermediate hobby grower. Growers can keep track of their orchids by using the Orchid Journal, as well as print labels for their tags. This version of OrchidWiz comes with more than 4,000 photographs of the most common species and hybrids.

Available at www.orchidwiz.com for only \$95.00. Express 2012 can also be purchased as part of group order of five (5) or more for a discount. Contact Keith if you are interested in a group discounted order.



NMOG IS NOW ON FACEBOOK
FIND US UNDER "PAGES"

YOUR NMOG LIBRARY

One benefit of membership in NMOG is access to our extensive library. Librarian, Walter Prah, has a large selection of books from which to choose available at every meeting. If there is a book you don't see just ask Walter, chances are it is in our collection. The only request we make is that books be returned at the following months meeting so others may have access to them.

The New Mexico Orchid Guild Newsletter
is published monthly
Please visit our website

www.nmog.org

Board of Directors for 2012

President

Steve Fischer (505) 343-0852
robinson@nmia.com

Vice President

Joanne Bodin (505) 880-8326
jsbodin@msn.com

Secretary

Debby Lieberman (505) 286-0196
deblieberman@earthlink.net

Treasurer

Keith Mead (505) 898-0975
kjk@comcast.net

Trustees

Sue Brych
sbrych@q.com (505) 345-3929

Adrienne Carroll (505) 681-1313
adringeeek@gmail.com

Jane Cole (505) 298-0031
kandjcole@comcast.net

Mable Orndorff 505-292-5724
phelphy@aol.com

Librarian

Walter Prah (505) 866-6512
wfp@comcast.net

Editor

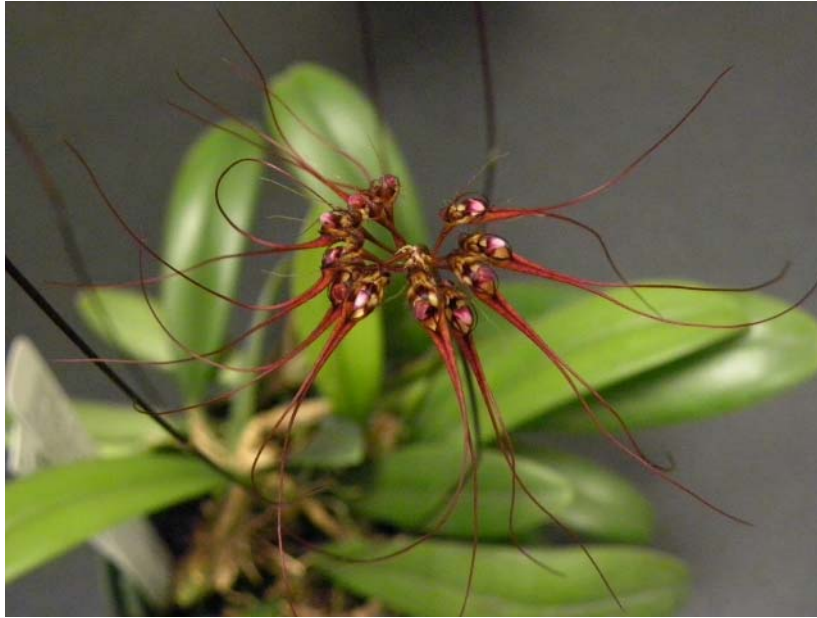
Keith Mead (505) 898-0975
kjk@comcast.net

The New Mexico Orchid Guild, Inc. is a non-profit 501 (C) (3) organization dedicated to community service and the study of orchids.

Annual Dues are \$25.00 for individual or family membership.

Contact: NMOG at PO Box 26473, Albuquerque, NM 87125

November Show and Tell Winners



FIRST PLACE DIVISION I

Bulb. Gracillum

Shown by Steve Fischer

Photo by Kathy Mancini

Plants are found in lowland forest tree branches in Thailand, Burma and Malaysia south and east through the Solomon islands at elevations of 0 to 150 meters.

Keep plant in warm temperatures. Keep moist in summer seasons and do not allow mix to dry, in winter keep the mix slight dry and reduce watering. Keep good air movement to avoid fungal growth. Keep plants in shade. Pot plants in sphagnum moss, fine bark, or mounted.

SECOND PLACE DIVISION I

Blc. Chunyeah 'Good Life' AM/AOS
Blc. Tassie Barbero x Blc. Kuan Miao Chen

Shown by Walter Prah

Photo by Kathy Mancini

Another easy to grow Cattleya. It grows in intermediate conditions in high light and is fertilized every two waterings. Does best if dried out between watering with good ventilation and air circulation.

Registered in 1991, Blc. Chunyeah is a successful yellow standard cattleya grex with a number of awarded clones. The cultivar 'Good Life' was awarded an AM/AOS at the 2002 New York International Orchid Show. It blooms throughout the year as growths mature, producing fragrant 5-6" rich yellow flowers with red lips. .



More Show and Tell Winners



FIRST PLACE DIVISION II

Otaara Island Flare 'Fragrance',
Blc. Oconee x Lctna. Peggy San

Shown by Lisa Villanueva
Photo by Kathy Mancini

Full, mid-sized red-splashed, pink flowers with dark red lips and two lemon-yellow eyes. Prefers moderate to bright conditions. Mature plant size will be compact to mid-sized. (Now Rhyntonleya... *Orchid Wiz*)

FIRST PLACE DIVISION III

Blc Volcano Blue 'Volcano Queen'

Shown by Marlene Roberts
Photo by Kathy Mancini



20th World Orchid Conference Ends on High Note

The 20th World Orchid Conference (20WOC) ended on a high note, with the orchid extravaganza, held in Singapore for the second time, being proclaimed as "the finest there has ever been".

The praise came from the World Orchid Conference Trust and the President of the Royal Horticultural Society Ms Elizabeth Banks.

The event, themed "Where New and Old World Orchids Meet", consisted of a four-day conference, eight-day World Orchid Conference Show and Marketplace.

The 'Olympics of Orchids' featured some 50,000 orchids of 5,000 varieties, and had a attendance of over 1,000 delegates and about 300,000 visitors over the eight-day period.

Visitors were treated to more than 75 stunning displays which showcased spectacular orchids from around the world. Ticket-holders also enjoyed a preview of the Flower Dome at Gardens by the Bay.

Highlights include various dignitaries who graced the event, such as President Tony Tan Keng Yam and Deputy Prime Minister Tharman Shanmugaratnam, as well as a visit by Sir Elton John, who received an orchid named after him at the show.

Organised by the National Parks Board and Orchid Society of Southeast Asia, the conference is the largest orchid show held in Singapore to date.

Dr. Kiat W.Tan, Chairman of the 20WOC Organizing Committee and CEO of Gardens by the Bay, said that the positive feedback received reinforces Singapore's position as a City in a Garden, and cultivated in many Singaporeans and international visitors an appreciation for orchids and greenery.

Visitors were also able to purchase orchid-related products such as cocoa-scented orchid, orchid vanilla tea, and event commemorative stamps.

For those who missed out on the event, a special edition photography book titled 'Orchids of Splendour: A Face of Singapore', featuring 55 pictures of various orchids taken at the Singapore Botanic Gardens, is available at the Garden Shop and Library Shop at the Singapore Botanic Gardens.

The book retails for S\$15, and all proceeds will go to the Native Orchid Conservation Fund.

The event also saw Guayaquil, Ecuador, winning the bid to host the 22nd World Orchid Conference, which is to be held in 2017. The 21st WOC in 2014 will be held in Johannesburg, South Africa.

AsiaOneNews
Sunday, Nov 20, 2011



Sir Elton John, who received an orchid named after him at the show.

Orchid partnership blossoms with Fairchild garden

By Tania Valdemoro Longest

The Miami Herald November 9, 2011

Will orchids — those beautiful flowers that send rabid collectors scurrying to far-flung corners of the world in search of new varieties — trigger a flood of visitors to Miami? That's one of the goals behind a new partnership that will infuse Fairchild Tropical Botanic Garden with 15,000 new varieties of orchids by next summer.

The 83-acre Coral Gables garden will become the new home of the Delray Beach-based American Orchid Society, which will close its own gardens to the public on Nov. 30. The society has sold its building, 3.5-acre gardens and greenhouse to the Sandra C. Slomin Foundation and Family Center for Autism and Related Disabilities for \$3.1 million.

The partnership brings together two forces in the horticulture world in a way that is intended to play to both of their strengths. Fairchild, which already gets 350,000 visitors annually, expects the society's collection of orchids to attract even more collectors, scientists, students and tourists to the botanical garden

The society, which has struggled financially because of shrinking donations and membership and a downturn in its investments, will relocate in phases, starting after Jan. 1. By June, Fairchild will finish building a new conservatory for rare orchids and the last of the orchids will be brought to Coral Gables from Palm Beach County.

South Florida growers and hobbyists praised the partnership for keeping a prestigious organization in South Florida and bringing the Society's intellectual heft and fame closer to them.

"For many of us here, it is a fulfillment of a lifelong dream," said Martin Motes, owner of Motes Orchids, one of the largest commercial orchid growers in the Redland. "South Florida has long been a center for orchid culture. It is set to become a world center for orchids."

Robert Fuchs, owner of R.F. Orchids in Redland, said the move puts Miami-Dade on par with London as a must-see destination for serious collectors, scientists and others who are savvy in botany.

Fuchs said the collection — housed at Harvard University for years before the Society moved to Florida — will bring new prestige to Fairchild.

"The American Orchid Society has the best orchid library in the Americas and orchid art work that is phenomenal. People will come from all over the world to see it. They will also visit local nurseries," Fuchs said.

Kerry Herndon, owner of Kerry's, a Homestead grower that produces more than a million orchids a year, said the partnership would help the Society survive at a time when Internet resources threaten membership in plant societies.

Orchids are second to poinsettias in potted plant popularity in the United States. Florida producers put out at least \$50 million in wholesale volume annually, joining California and Hawaii as the top orchid states. South Florida is home to large and small growers and thousands of hobbyists who collect for pleasure.

Once a hobby for the rich, orchid collecting and cultivation spread to the middle class in the 1960s when growers figured out how to mass produce identical orchids through cloning. Now, local aficionados hope to take more advantage of the Society's resources.

"The society will bring depth to the orchid community," Motes said. "Their magazine, Orchids, will become better at seeding the community with information. And it will be in closer conjunction with the orchid-growing community."

The partnership "will attract more visitors," said Laura Jamieson, executive director of the Miami Beach Botanical Garden. "I believe people expect to see orchids because we are in a subtropical zone. We can grow them so easily. We attach them to trees, we have whole orchid gardens."

Bruce Greer, president of Fairchild's board of trustees, said he expects the orchids to visibly enhance the botanical garden

In 2008, Miami hosted the World Orchid Conference and Show, a triennial event that enthusiasts liken to the “Super Bowl of orchids.” On display at the Miami Mart and Convention Center were thousands of delicate blooms and seedlings. The move can only make Miami more competitive in its bid to host future World Orchid and Show Conferences, Greer said.

The 90-year-old American Orchid Society, known for its education programs, has declined in membership from 29,000 members in 2001, when it moved to its home from West Palm Beach, to 10,000. Nearly 1,000 members live in Florida; the rest come from all over the world.

In 2009, the society faced an estimated \$500,000 deficit in its \$2.5 million operating budget. At that time, its board agreed to close the gardens and lay off half of its 25-member staff. But supporters and local orchid societies raised \$40,000 to keep the grounds open year-round and recruited volunteers to help care for plants. “When we moved to our home in Delray Beach, we thought it was our destiny. It wasn’t long before we found out we were not the best overseers of a public garden or that we should be in the retail business, said Peter Furniss, treasurer of the American Orchid Society, which was founded in 1921. “We lost sight of the main thing — our members, conservation, education and research.”

Talks with Fairchild began in 2009, but the society sent proposals to other entities, including The Huntington Libraries, Art Collections and Botanical Gardens in San Marino, Calif. In the end though, “Fairchild seems like a perfect fit for us. We have the same mission,” Furniss said.

Chris Crepage, show co-chair of the Fort Lauderdale Orchid Society, said her members would come to Fairchild for judging orchid shows and training. While she is disappointed the Society is closing its Delray Beach location, she is thankful that the move is not to a site further away.

“It would have been terrible if the American Orchid Society left the state. We have a lot of hobbyists and it would have removed that center. It is the mother organization for all of the orchid societies in North and South America,” said Crepage, who has amassed 300 orchids in her home collection since 1987.

Fairchild had the right environment and climate, allowing the orchids to have a greater outdoor presence.

“If they went further north, they would have to be in a greenhouse,” Furniss said.

The society has until March 30 to relocate its orchids, its collection of 200 European orchid paintings dating back to the 1800s, its book collection and its nine-member staff to Fairchild.

But Furniss said he hopes the orchids will start coming down soon after the closing. Greer expects the move to occur in phases, starting after Jan. 1, and that the optimal time to move plants is in February.

Both groups will remain independent of each other. The society will share Fairchild’s administrative space.

The partnership is expected to strengthen Fairchild’s educational programs, beginning with the Fairchild Challenge, which provides a hands-on curriculum for high school students, teaching them critical scientific and mathematical precepts using plants, species and researchers.

For example, it will help students understand the lessons of far-flung research projects closer to home. Greer said students will be able to see species of orchids in Coral Gables that researchers are studying right now in China. There, researchers are monitoring orchids that are climbing up a mountain to get to cooler weather to survive.

Fairchild is also creating a micro propagation lab in its DiMare Science Village. It will be where scientists breed endangered orchids through tissue culture.

“This will inspire kids to become scientists and educators. They will see the orchids growing,” Greer said.

For its part, the Society intends to strengthen Orchids, the monthly magazine that encourages enthusiasts to join the society, Furniss said.

“We will spend more time worrying about that,” he said.

Monthly Checklist for November and December

Cattleya

Growers of just about every level of expertise will have begun to notice autumn conditions by now. Days are becoming shorter, hence cooler; the sunlight has less intensity as a result of the sun's lowering angle, nights are longer and generally cooler. Plants are responding by slowing and ripening their growth in preparation for winter.

The first cultural change noticed should be a reduced frequency of watering, as the plants dry out more slowly. This is a function of both the reduced day length and lower temperatures, as well as the plants' slowing growth rate. Reduced water needs signal a reduced need for fertilization. Note that the key word is reduced, not eliminated. Feed less frequently and at lower dosage, but feed. Growths, made during summer's heat, and relatively soft and green, will be ripening -- hardening -- in preparation for a brief period of rest (in many cases).

Many of these ripening growths will have a sheath, presaging the coming winter or spring flowering season. In some cases, these sheaths will have been evident since as early as July. (Early sheath development does not mean early flowering on plants with winter-spring seasons.) You may notice that some of these sheaths are showing signs of yellowing. This is not abnormal. Autumn's more pronounced temperature fluctuation can lead to water condensation inside the sheath, hastening the normal process of senescence, so yellowing sheaths can be left on the plant only so long before they must be carefully removed to preserve the bud primordia within. Water condensation left unchecked can rot the bud primordia. The sheaths can be safely removed by slitting open and peeling down toward the pseudobulb.

Cool-Growing Orchids

One can almost hear a sigh of relief from all of the cool-growers, from masdevallias to odontoglossums. As day temperatures decline, one can see a noticeable improvement in these plants. Shorter days and lower light levels do not seem to bother them.

Repot before winter arrives.

Cymbidium

Finally we begin in earnest the main cymbidium season. *Cymbidium ensifolium* can give some early and fragrant hybrids, but it is now that the bulk of the crop will be flowering. The season lasts for about seven months, adding color to any collection. Miniature varieties will peak for the next three to four months. There are three important things to do: stake inflorescences ramrod straight for best presentation, watch for slugs and snails (especially just after a rain), and fertilize with a mild balanced formula regularly.

Cymbidium ensifolium produces delicate flowers
with a delightful citrus fragrance



Oncidium crispum Complex

This is the season for plants in *Oncidium* section *crispum* from Brazil to shine. Extremely vigorous hybrids come in wide varieties of markings dominated with chestnut and brown and butter yellow. Give plants high light to produce strong upright inflorescences. The pseudobulbs should be plump, so do not let the plants dry out while they are in bloom. Later, plants will enter a dormant period.

Paphiopedilum

The flowering season for the "toads" or "bulldog" paphs is just getting underway. These cannot be grown everywhere, but where cooler summer nights allow their growth, there is no longer-lasting or more exotic display than these. Paphiopedilums are, in general, not heavy feeders, and it is especially important with this type to reduce nitrogen levels now for best flowering and spike length. Be watchful for water accumulating in the growth around the sheath, or for the late-season warm spell, either of which can lead to the sheath's rotting. As the spikes emerge, do not change the orientation of the plant toward the light, as this can lead to a crooked or twisted spike

While paphiopedilums rarely like to dry out entirely, water needs are significantly reduced beginning now. Overwatering at this time of year can quickly lead to root rot or erwinia problems. Now is the time to practice good sanitary practices in your greenhouse or growing areas, as pest and disease problems have a way of multiplying rapidly in the darker and more crowded conditions that generally mark the winter growing area. With paphiopedilums, especially, "cleanliness is next to godliness" and if the growing area is littered with old foliage, weeds and dying flowers, keeping the plants alive and flowering will be next to impossible.

Phalaenopsis

Shortening days and cooler nights are the signals for inflorescence initiation in phalaenopsis. In more northern climates, or on the west coast, growers have already begun to see the early inflorescences that may be ready for Christmas. In the eastern areas, nights in the greenhouse will now be in the low to mid 60s, depending on the thermostat setting, so the first of our phalaenopsis will not begin to bloom until Valentine's Day at the earliest.

A reduction in nitrogen levels will go a long way to giving the best possible spiking, as will a boost in potassium and phosphorus. In other words, a "bloom booster"-type fertilizer is definitely indicated in the next few months. Disease and pest problems are best dealt with now, especially as mealybugs hide in the bracts and flower buds. Once they have established themselves, they are difficult to eradicate, and flower damage or crippling results. Potential disease problems can be dealt with by the application of a copper-based compound to control/alleviate rot problems before they start. There is nothing more frustrating than to have shepherded your plants through a growing season, only to have them decline before your eyes.

Vandaceous Genera

Whereas the general decline in temperatures is beneficial to cool-growing orchids, it is not for vandaceous plants. The only cold-hardy member is *Neofinetia falcata*. Orient your plants in such a way as to take advantage of as much light as possible. This can be a problem in northern latitudes. Reduce watering and feeding schedules.



Neofinetia falcata will thrive in cooler temperatures and produce graceful vanilla-scented flowers.

2012
NEW MEXICO ORCHID GUILD MEMBERSHIP FORM

Name _____

Address _____

Telephone: Home _____ Cell _____

Email _____

What orchids do you currently grow?

What would you like to acquire?

Meeting topics or speakers that would interest you?

Areas of volunteer interest: Newsletter _____ Photography _____

Hospitality _____ Show Committee _____ Publicity _____

Dues are \$25 annually January through December.

Make checks payable to NMOG and mail to Keith Mead, Treasurer
PO Box 26473, Albuquerque, NM 87125-6473

Email addresses are used for communication and newsletter distribution only.

We do not share email addresses.